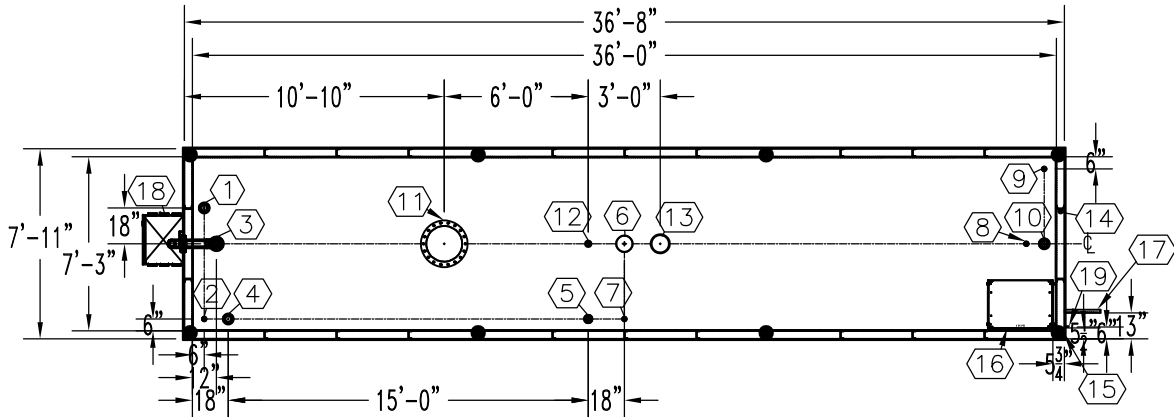


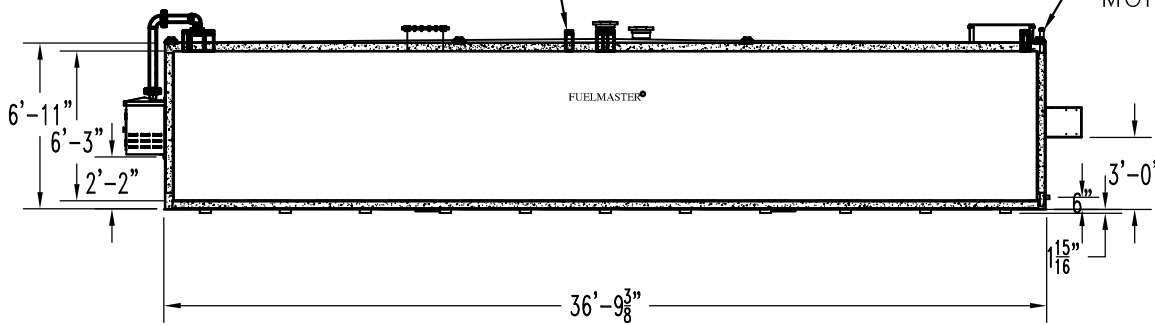
NOTE:

OVERALL SHIPPING DIMENSION: 40'-8" L X 8'-6" W X 9'-4" H



TOP VIEW

THREADED CONNECTION (TYP.) SEE TOP VIEW



ELEVATION

ITEM	SIZE	SUGGESTED FUNCTION
1	4"	PHASE 1 VAPOR RECOVERY/SPARE
2	2"	CLOCK LEVEL GAUGE
3	6"	FILL W/3" FILL LIMITER
4	4"	ELECTRONIC LEVEL GAUGE (OPTIONAL)
5	3"	PRIMARY WORKING VENT W/RISER PIPE
6	8"	PRIMARY TANK EMERGENCY VENT
7	2"	SPARE
8	2"	SUCTION PUMP
9	2"	HIGH LEVEL ALARM
10	4"	SPARE
11	18"	ABOVE LIQUID MANHOLE, DWG."MHB001"
12	2"	SECONDARY WORKING VENT
13	8"	SECONDARY CONTAINMENT EMERGENCY VENT
14	2"	SECONDARY MONITOR PIPE
15	4"	FIRE RATED MATERIAL FILL
16	N/A	9822 DISPENSER BRACKET, DWG."PBB015"
17	N/A	DISPENSER BRACKET, DWG."DSB001"
18	FP3	SIMPLEX BOX, DWG."SBB006"
19	2" X 2"	GROUND CLIP, DWG."MCB004"

TANK SPECIFICATIONS

VENTING CAPACITY: PRIMARY TANK - 462,600 CUBIC FEET PER HOUR

SECONDARY TANK - 496,300 CUBIC FEET PER HOUR

MATERIAL: PRIMARY TANK - 1/4" THICK

SECONDARY TANK - 3/16" THICK

2" STD. PIPE FOR MONITOR ACCESS

SEAL WELD ALL FITTINGS AND TANK

4" SPACE BETWEEN INNER & OUTER TANKS FILLED WITH LIGHT WEIGHT FIRE-RATED MATERIAL

END VIEW

PRODUCT CODE	GALLONS	DESCRIPTION	OVERALL SIZE	SHIP WT.
FMAA112MVS001	12,000	U/L-2085 ABOVE GROUND VAULT TANK W/FUEL SYSTEM	36'-8" L X 7'-11" W X 7'-1 H	49,550 LBS.

THIS DRAWING AND DESIGN SHOWN HEREIN IS THE PROPERTY OF CONTAINMENT SOLUTIONS. USE OR COPIES THEREOF CANNOT BE MADE WITHOUT WRITTEN CONSENT.



DRAWN BY: D. ROVANG	DATE DRAWN: 07-01-09
DWG NUMBER: 5103552S	SCALE: 1:96
REV: A	REV BY: RSO
DATE: 01-01-19	SHEET: 1 OF 1

CUSTOMER NAME: _____

APPROVED BY: _____ DATE: _____