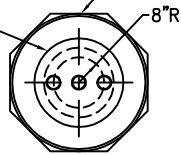
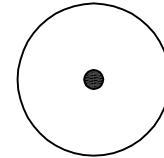




42" DOUBLE WALL CONTAINMENT COLLAR
 22" FLGD. MANWAY
 w/3-4" C.S. NPT FTGS.
 & COVER

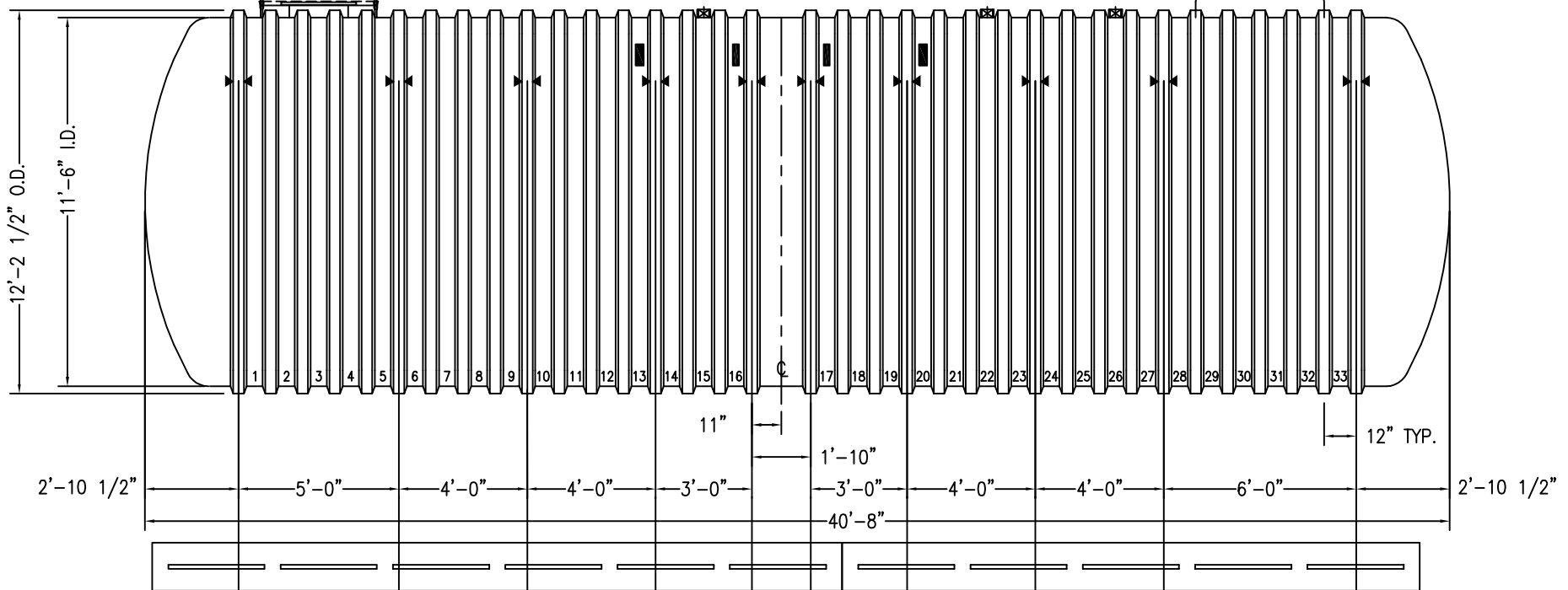


4" FRP NPT FTGS. (3 TYP.)



DW PTS (WT34) 42/8-4'
 WATERTIGHT TANK SUMP

HYDROSTATIC RESERVOIR



OPTIONAL 18"x 8"x 22' DEADMAN

OPTIONAL 18"x 8"x 18' DEADMAN

NOTES:

- ▶◀ HOLD DOWN STRAP LOCATION
- TYPE "13" LIFT LUG - SD
- TYPE "13" LIFT LUG - HD

HYDROGUARD (12')-30000		DATE:	10/01/18
SINGLE-SUMP SYSTEM		DRAWN BY:	R.OXNER
CONTAINMENT SOLUTIONS	CAPACITY:	REvised:	
	WEIGHT: DRY/WET	DWG NUMBER:	
	30,147	1230DWHG-US	
	30350		