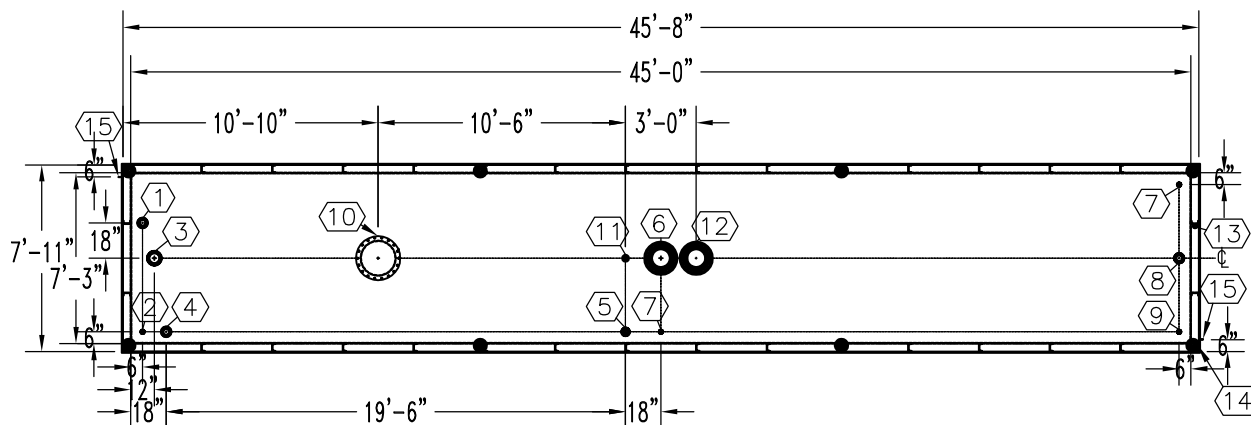


**NOTE:**  
 OVERALL SHIPPING DIMENSION: 46'-1" L X 8'-6" W X 8'-1" H

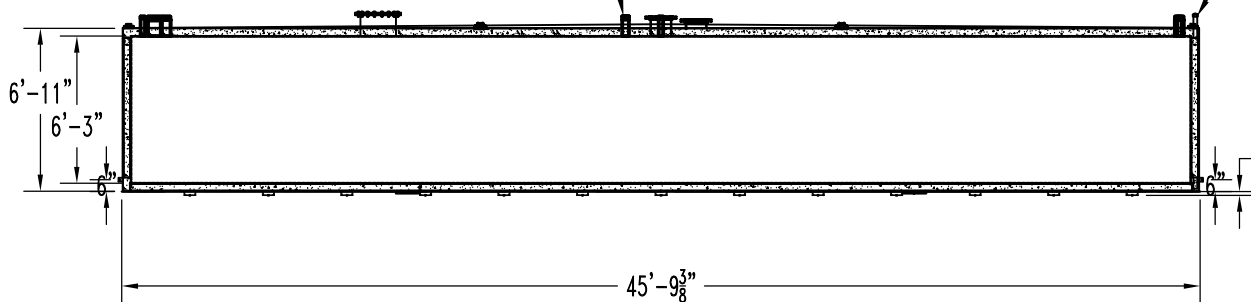
ITEM	SIZE	SUGGESTED FUNCTION
1	4"	PHASE 1 VAPOR RECOVERY/SPARE
2	2"	MECHANICAL GAUGE
3	6"	FILL
4	4"	ELECTRONIC LEVEL GAUGE
5	3"	PRIMARY WORKING VENT
6	10"	PRIMARY TANK EMERGENCY VENT
7	2"	SPARE
8	4"	SUBMERSIBLE PUMP
9	2"	SUCTION PUMP/SPARE
10	18"	ABOVE LIQUID MANHOLE, DWG."MHB001"
11	2"	SECONDARY WORKING VENT
12	10"	SECONDARY CONTAINMENT EMERGENCY VENT
13	2"	SECONDARY MONITOR PIPE
14	4"	FIRE RATED MATERIAL FILL
15	2" X 2"	GROUND CLIP, DWG."MCB004"



**TANK SPECIFICATIONS**

VENTING CAPACITY: PRIMARY TANK - 493,000 CUBIC FEET PER HOUR  
 SECONDARY TANK - 524,000 CUBIC FEET PER HOUR  
 MATERIAL: PRIMARY TANK - 1/4" THICK  
 SECONDARY TANK - 3/16" THICK

**TOP VIEW**  
 THREADED CONNECTION  
 (TYP.) SEE TOP VIEW



**ELEVATION**

2" STD. PIPE FOR  
 MONITOR ACCESS  
 SEAL WELD ALL  
 FITTINGS AND TANK  
 4" SPACE BETWEEN  
 INNER & OUTER TANKS  
 FILLED WITH LIGHT WEIGHT  
 FIRE-RATED MATERIAL

**END VIEW**

PRODUCT CODE	GALLONS	DESCRIPTION	OVERALL SIZE	SHIP WT.
V4AA115MVS000	15,000	U/L-2085 ABOVE GROUND VAULT TANK	45'-8" L X 7'-11" W X 7'-1" H	60,400 LBS.

**CONTAINMENT SOLUTIONS**

THIS DRAWING AND DESIGN SHOWN HEREIN IS THE PROPERTY OF CONTAINMENT SOLUTIONS. USE OR COPIES THEREOF CANNOT BE MADE WITHOUT WRITTEN CONSENT.

CUSTOMER NAME: \_\_\_\_\_  
**APPROVED** BY: \_\_\_\_\_ DATE: \_\_\_\_\_

DRAWN BY: D. ROVANG DATE DRAWN: 01-01-14  
 DWG NUMBER: 5100028 SCALE: 1:96  
 REV: \_\_\_\_\_ REV BY: \_\_\_\_\_ DATE: \_\_\_\_\_ SHEET: 1 OF 1