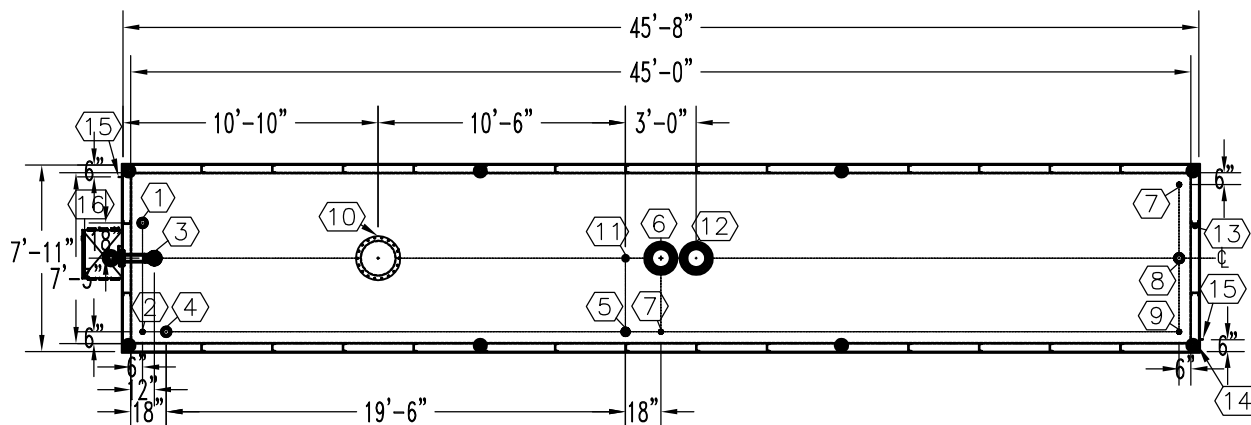


NOTE:
 OVERALL SHIPPING DIMENSION: 47'-8" L X 8'-6" W X 8'-5" H

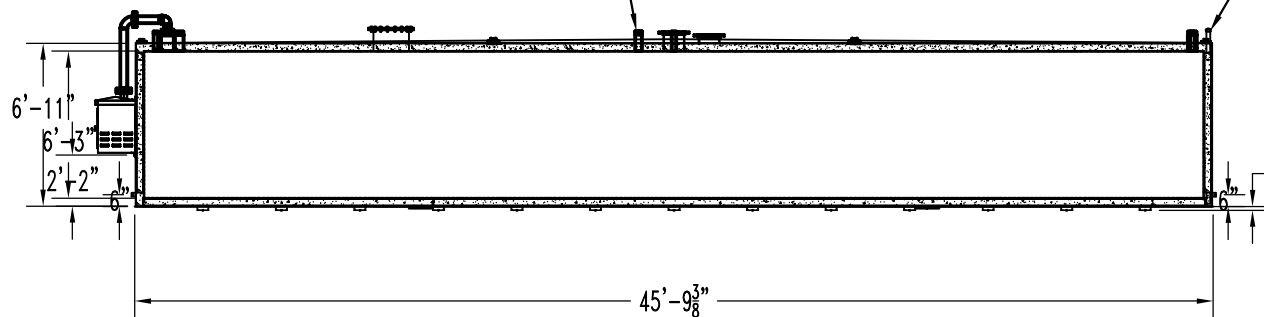
ITEM	SIZE	SUGGESTED FUNCTION
1	4"	PHASE 1 VAPOR RECOVERY/SPARE
2	2"	MECHANICAL GAUGE
3	6"	FILL
4	4"	ELECTRONIC LEVEL GAUGE
5	3"	PRIMARY WORKING VENT
6	10"	PRIMARY TANK EMERGENCY VENT
7	2"	SPARE
8	4"	SUBMERSIBLE PUMP
9	2"	SUCTION PUMP/SPARE
10	18"	ABOVE LIQUID MANHOLE, DWG."MHB001"
11	2"	SECONDARY WORKING VENT
12	10"	SECONDARY CONTAINMENT EMERGENCY VENT
13	2"	SECONDARY MONITOR PIPE
14	4"	FIRE RATED MATERIAL FILL
15	2" X 2"	GROUND CLIP, DWG."MCB004"
16	3" PIPE	REMOTE FILL BOX, DWG."SBB006"



TANK SPECIFICATIONS

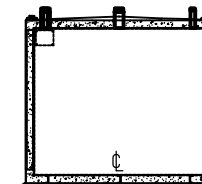
VENTING CAPACITY: PRIMARY TANK - 493,000 CUBIC FEET PER HOUR
 SECONDARY TANK - 524,000 CUBIC FEET PER HOUR
 MATERIAL: PRIMARY TANK - 1/4" THICK
 SECONDARY TANK - 3/16" THICK

TOP VIEW
 THREADED CONNECTION
 (TYP.) SEE TOP VIEW



ELEVATION

2" STD. PIPE FOR MONITOR ACCESS
 SEAL WELD ALL FITTINGS AND TANK
 4" SPACE BETWEEN INNER & OUTER TANKS FILLED WITH LIGHT WEIGHT FIRE-RATED MATERIAL



END VIEW

PRODUCT CODE	GALLONS	DESCRIPTION	OVERALL SIZE	SHIP WT.
V4AA115MVS08	15,000	U/L-2085 ABOVE GROUND VAULT TANK	45'-8" L X 7'-11" W X 7'-1" H	60,800 LBS.



THIS DRAWING AND DESIGN SHOWN HEREIN IS THE PROPERTY OF CONTAINMENT SOLUTIONS. USE OR COPIES THEREOF CANNOT BE MADE WITHOUT WRITTEN CONSENT.

CUSTOMER NAME: _____
APPROVED BY: _____ DATE: _____

DRAWN BY: D. ROVANG DATE DRAWN: 09-01-11
 DWG NUMBER: 5104658 SCALE: 1:96
 REV:B REV BY:DAR DATE: 01-01-14 SHEET:1 OF 1