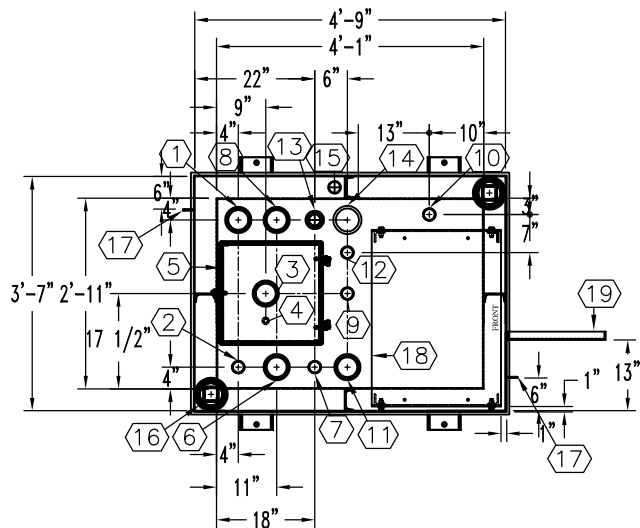


**NOTE:**  
**OVERALL SHIPPING DIMENSION: 5'-1" L X 4'-2" W X 6'-1" H**



ITEM	SIZE	SUGGESTED FUNCTION
1	4"	PHASE 1 VAPOR RECOVERY/SPARE
2	2"	CLOCK LEVEL GAUGE
3	4"	FILL W/2" FILL LIMITER
4	1/2"	DRAIN FOR SPILLBOX
5	15 GAL	SPILLBOX, DWG."SBB001"
6	4"	ELECTRONIC LEVEL GAUGE (OPTIONAL)
7	2"	PRIMARY WORKING VENT W/RISE PIPE
8	4"	PRIMARY TANK EMERGENCY VENT
9	2"	SUCTION PUMP
10	2"	HIGH LEVEL ALARM
11	4"	SPARE
12	2"	SPARE
13	2"	SECONDARY WORKING VENT
14	4"	SECONDARY CONTAINMENT EMERGENCY VENT
15	2"	SECONDARY MONITOR PIPE
16	4"	FIRE RATED MATERIAL FILL
17	2" X 2"	GROUND CLIP, DWG."MCB004"
18	N/A	9822 DISPENSER BRACKET, DWG."PBB015"
19	N/A	DISPENSER BRACKET, DWG."DSB001"

**TANK SPECIFICATIONS**

VENTING CAPACITY: PRIMARY TANK - 63,200 CUBIC FEET PER HOUR

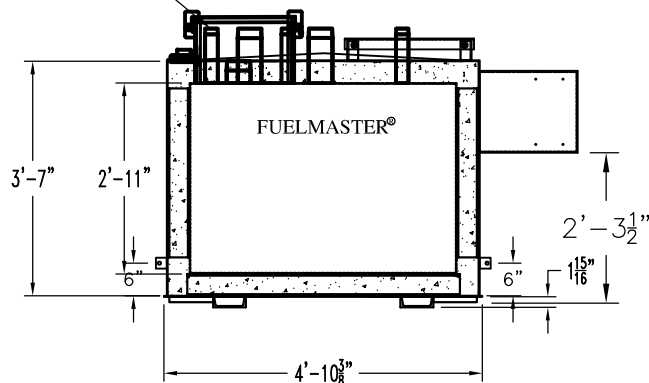
SECONDARY TANK - 84,200 CUBIC FEET PER HOUR

MATERIAL: PRIMARY TANK - 3/16" THICK

SECONDARY TANK - 3/16" THICK

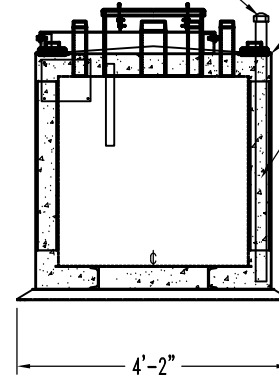
THREADED CONNECTION  
 (TYP.) SEE TOP VIEW

**TOP VIEW**



**ELEVATION**

2" STD. PIPE FOR  
 MONITOR ACCESS



**END VIEW**

PRODUCT CODE	GALLONS	DESCRIPTION	OVERALL SIZE	SHIP WT.
FMAA1250VS001	250	U/L-2085 ABOVE GROUND VAULT TANK W/FUEL SYSTEM	4'-9" L X 3'-7" W X 3'-9" H	4,100 LBS.

**CONTAINMENT SOLUTIONS®**

THIS DRAWING AND DESIGN SHOWN HEREIN IS THE PROPERTY OF CONTAINMENT SOLUTIONS. USE OR COPIES THEREOF CANNOT BE MADE WITHOUT WRITTEN CONSENT.

CUSTOMER NAME: \_\_\_\_\_  
**APPROVED** BY: \_\_\_\_\_ DATE: \_\_\_\_\_

DRAWN BY: D. ROVANG	DATE DRAWN: 01-01-14
DWG NUMBER: 5103540S	SCALE: 1:36
REV: B	REV BY: RSO
DATE: 01-01-19	SHEET: 1 OF 1