

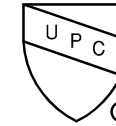
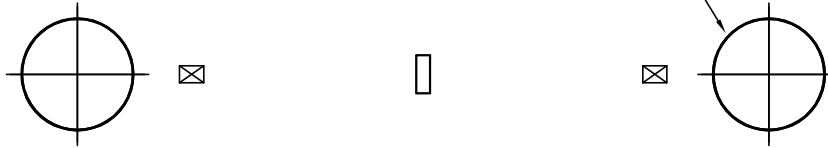
FLOWTITE PRODUCTS

SEPTIC / WASTE WATER

NOTE: CUSTOMER SUPPLIED FLEXIBLE PIPING COUPLING REQUIRED ON TANGENTIALLY MTD. NOZZLES, STUB-OUTS & NPT FITTINGS.

(24") 23-1/2" O.D. FRP ACCESS COLLAR w/ADHESIVE CHANNEL & 22 1/2" TANK TOP CUT-OUT (2 TYP.)

SHELL CODES: 2-E4S101S2



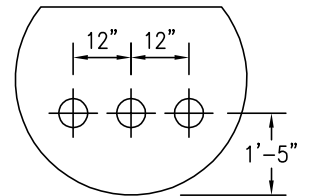
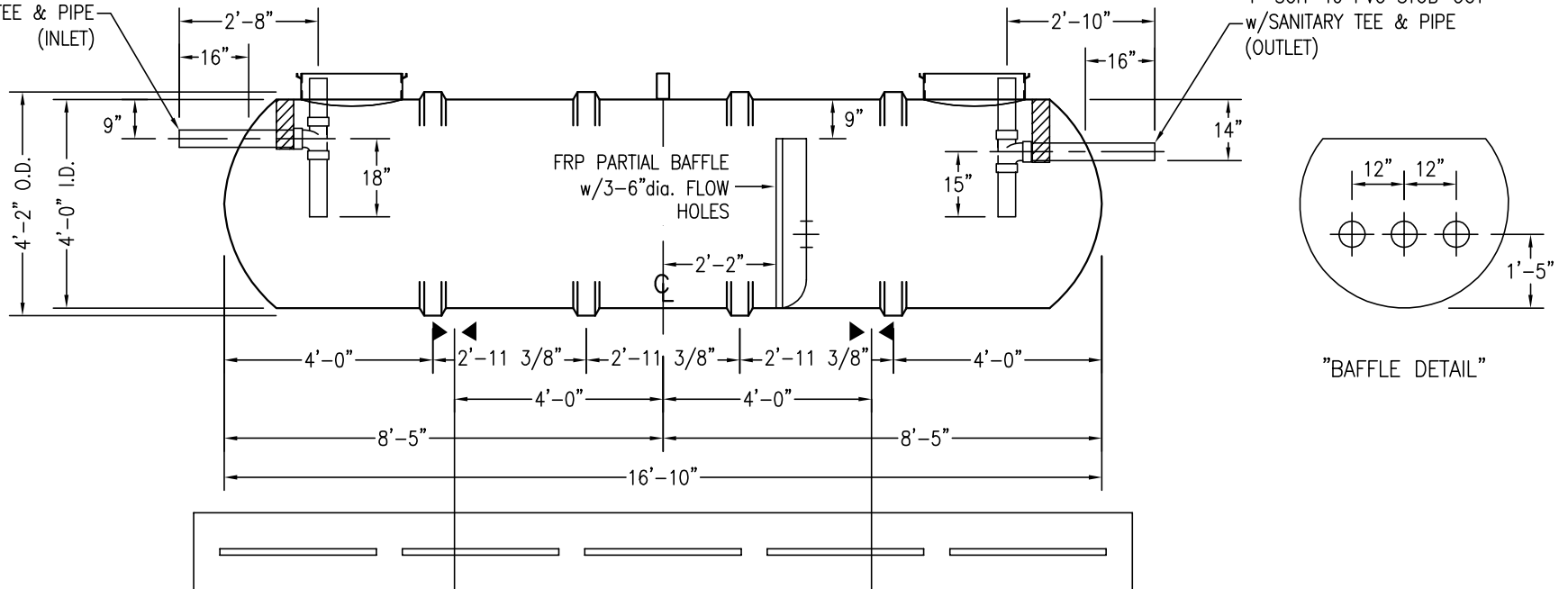
THIS IS AN IAPMO APPROVED TANK THE ONLY CHANGE ALLOWED TO THIS TANK IS TO INCREASE THE INLET AND OUTLET PIPE DIAMETER. MFG. PER. PE-C22.85

CAPACITIES:

LIQUID VOLUME BELOW OUTLET = 1140 GALS
AIR VOLUME ABOVE OUTLET = 374 GALS

4" SCH-40 PVC STUB-OUT w/SANITARY TEE & PIPE (INLET)

4" SCH-40 PVC STUB-OUT w/SANITARY TEE & PIPE (OUTLET)



OPTIONAL 18"x 8"x 18' DEADMAN

NOTES:

- ☒ HOLD DOWN STRAP CLIP
- ▶◀ HOLD DOWN STRAP LOCATION
- TYPE "13" LIFT LUG - SD
- TYPE "13" LIFT LUG - HD

SWT D-5 (4')-1500		DATE: 1/1/2014
IAPMO SEPTIC TANK		DRAWN BY: K.A.SOEDER
CONTAINMENT SOLUTIONS	CAPACITY: 1,514	REVISED:
	WEIGHT: DRY/WET 625	DWG NUMBER: 415CSW-IS