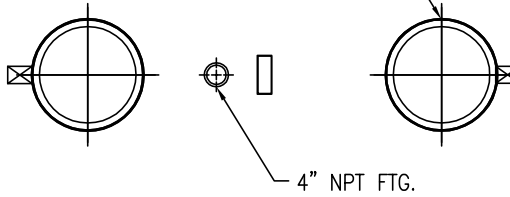


# FLOWTITE PRODUCTS

SEPTIC/WASTE WATER

NOTE: CUSTOMER SUPPLIED FLEXIBLE PIPING COUPLING REQUIRED ON TANGENTIALLY MTD. NOZZLES, STUB-OUTS & NPT FITTINGS.

(24") 23-1/2" O.D. FRP ACCESS COLLAR w/ADHESIVE CHANNEL & 22 1/2" TANK TOP CUT-OUT (2 TYP.)



SHELL CODES: 1-E4S120S2, 1-E4SECS2

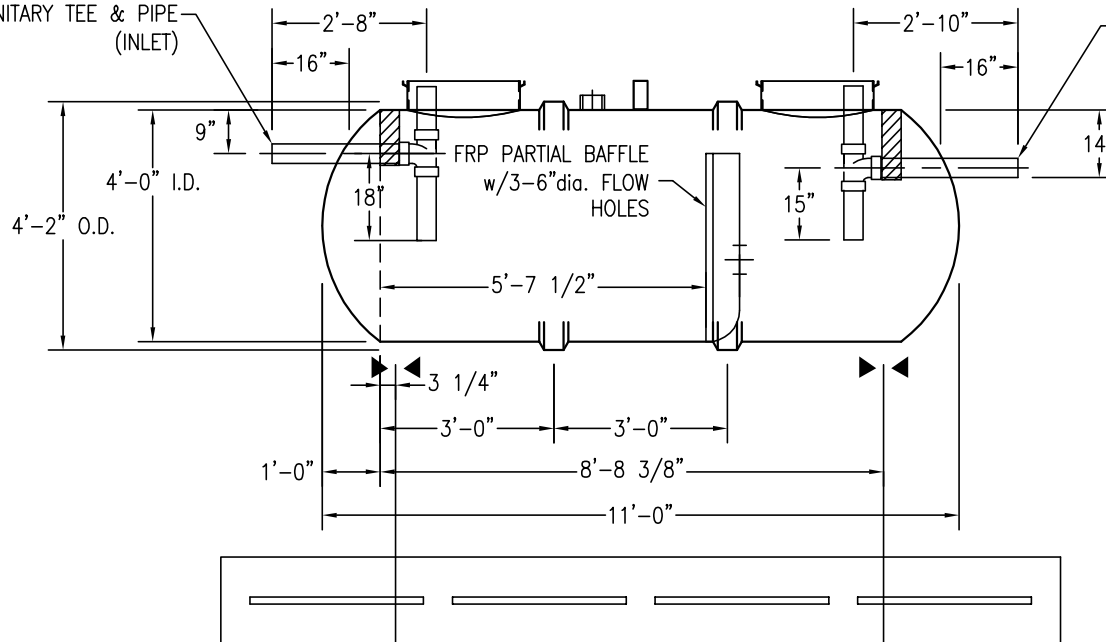


THIS IS AN IAPMO APPROVED TANK COMPLIANCE STANDARDS AND CODES: IAPMO/ANSI Z1000 UNIFORM PLUMBING CODE (UPC) INTERNATIONAL PLUMBING CODE (IPC) MFG. PER. PE-C22.85

CAPACITIES:  
LIQUID VOLUME BELOW OUTLET = 729 GALS  
AIR VOLUME ABOVE OUTLET = 237 GALS

4" SCH-40 PVC STUB-OUT w/SANITARY TEE & PIPE (INLET)

4" SCH-40 PVC STUB-OUT w/SANITARY TEE & PIPE (OUTLET)



"BAFFLE DETAIL"

OPTIONAL 18" x 8" x 14' DEADMAN

**NOTES:**

- ☒ HOLD DOWN STRAP CLIP
- ▶◀ HOLD DOWN STRAP LOCATION
- TYPE "13" LIFT LUG - SD
- TYPE "13" LIFT LUG - HD

SWT D-5 (4')-1000		DATE:	1/1/2014
IAPMO SEPTIC TANK		DRAWN BY:	J.HARMON
<b>CONTAINMENT SOLUTIONS S.</b>	CAPACITY:	REVISION:	4/1/17-A
	WEIGHT: DRY/WET	DWG NUMBER:	41MSW-IS
	966		
	400		