

FLOWTITE PRODUCTS

SEPTIC / WASTE WATER

NOTE: CUSTOMER SUPPLIED FLEXIBLE PIPING COUPLING REQUIRED ON TANGENTIALLY MTD. NOZZLES, STUB-OUTS & NPT FITTINGS.

SHELL CODES: 2-E4S132S3

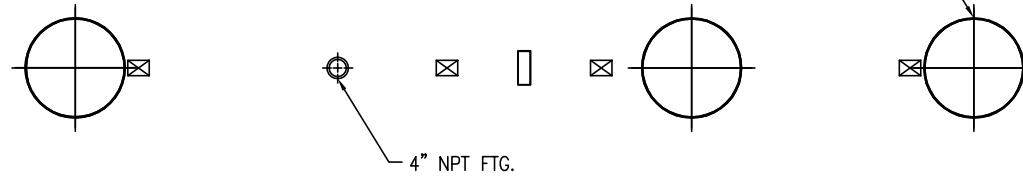


THIS IS AN IAPMO APPROVED TANK THE ONLY CHANGE ALLOWED TO THIS TANK IS TO INCREASE THE INLET AND OUTLET PIPE DIAMETER. MFG. PER. PE-C22.85

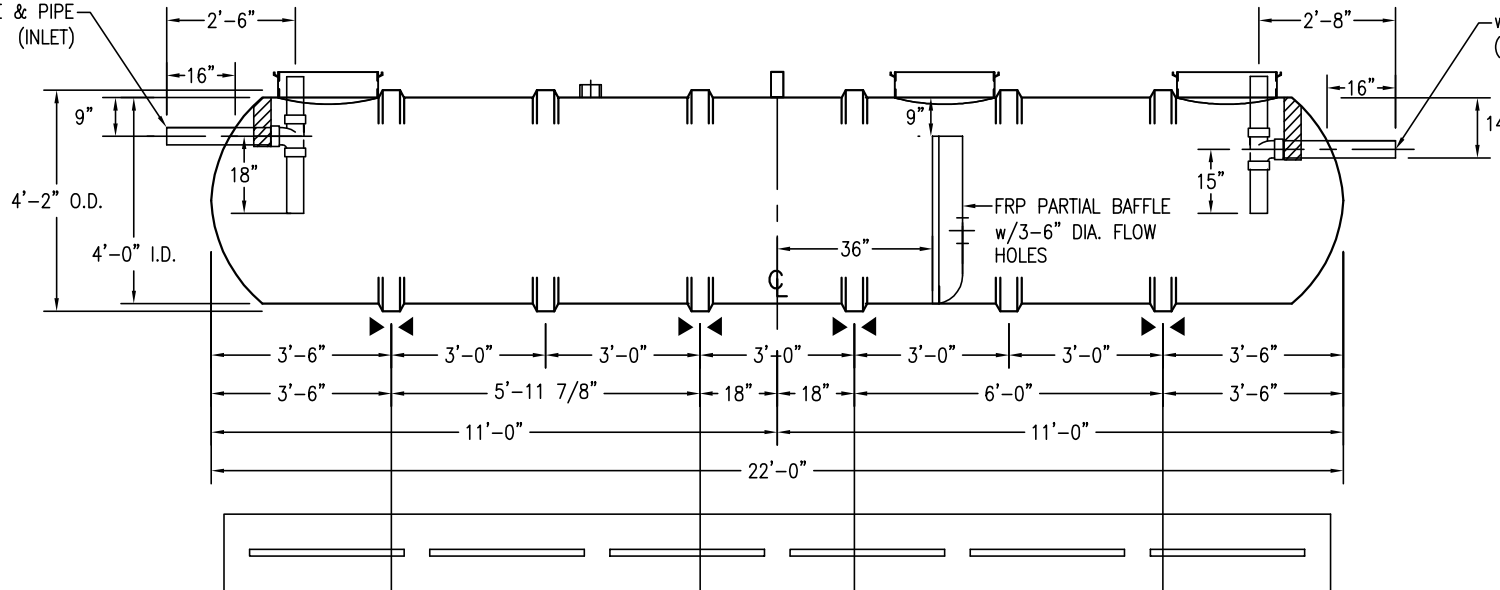
CAPACITIES:

LIQUID VOLUME BELOW OUTLET = 1504 GALS
AIR VOLUME ABOVE OUTLET = 496 GALS

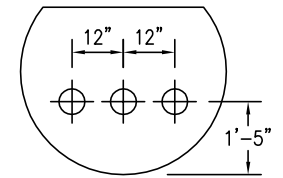
(24") 23-1/2" O.D. FRP ACCESS COLLAR w/ADHESIVE CHANNEL & 22 1/2" TANK TOP CUT-OUT (3 TYP.)



4" SCH-40 PVC STUB-OUT w/SANITARY TEE & PIPE (INLET)



4" SCH-40 PVC STUB-OUT w/SANITARY TEE & PIPE (OUTLET)



"BAFFLE DETAIL"

OPTIONAL 18"x 8"x 22' DEADMAN

NOTES:

- ☒ HOLD DOWN STRAP CLIP
- ▶◀ HOLD DOWN STRAP LOCATION
- TYPE "13" LIFT LUG - SD
- TYPE "13" LIFT LUG - HD

| | | | |
|------------------------------|-----------------|-------------|----------|
| SWT D-5 (4')-2000 | | DATE: | 1/1/2014 |
| IAPMO SEPTIC TANK | | DRAWN BY: | J.HARMON |
| CONTAINMENT SOLUTIONS | CAPACITY: | 2,000 | |
| | WEIGHT: DRY/WET | 850 | |
| | | REVISED: | |
| | | DWG NUMBER: | 42MSW-IS |