

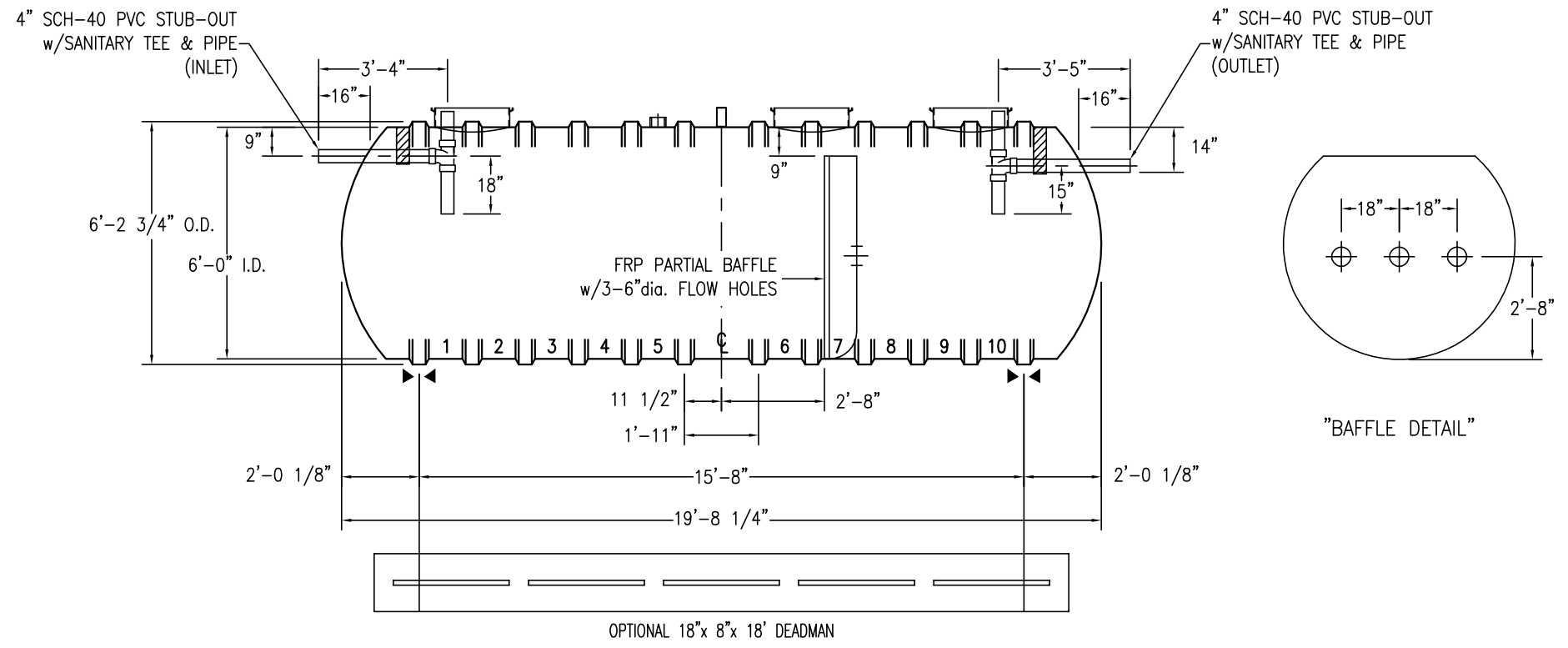
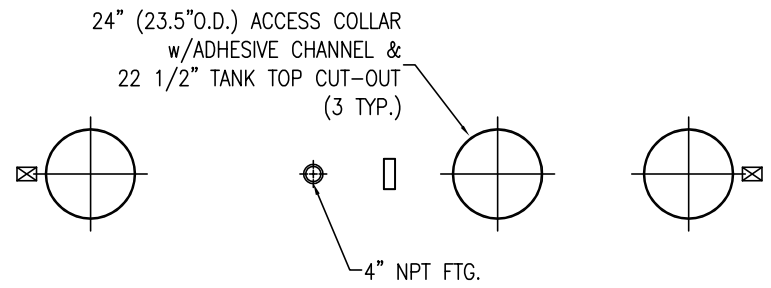
**FLOWTITE PRODUCTS**  
 SEPTIC / WASTE WATER  
 NOTE: CUSTOMER SUPPLIED "ASTM C-1644" APPROVED FLEXIBLE PIPING COUPLING REQUIRED ON TANGENTIALLY MTD. NOZZLES, & PIPES

SHELL CODES: 2-E6S06SD



THIS IS AN IAPMO APPROVED TANK THE ONLY CHANGE ALLOWED TO THIS TANK IS TO INCREASE THE INLET AND OUTLET PIPE DIAMETER. MFG. PER. PE-C22.85

CAPACITIES:  
 LIQUID VOLUME BELOW OUTLET = 3,430 GALS  
 AIR VOLUME ABOVE OUTLET = 528 GALS



- NOTES:
- ☒ HOLD DOWN STRAP CLIP
  - ▶◀ HOLD DOWN STRAP LOCATION
  - TYPE "13" LIFT LUG - SD
  - TYPE "13" LIFT LUG - HD

SWT D-6 (6')-4000		DATE: 1/1/2014
IAPMO SEPTIC TANK		DRAWN BY: K.A.SOEDER
<b>CONTAINMENT SOLUTIONS</b>	CAPACITY: 3,958	REVISED:
	WEIGHT: DRY/WET 1650	DWG NUMBER: 64MSW-IS