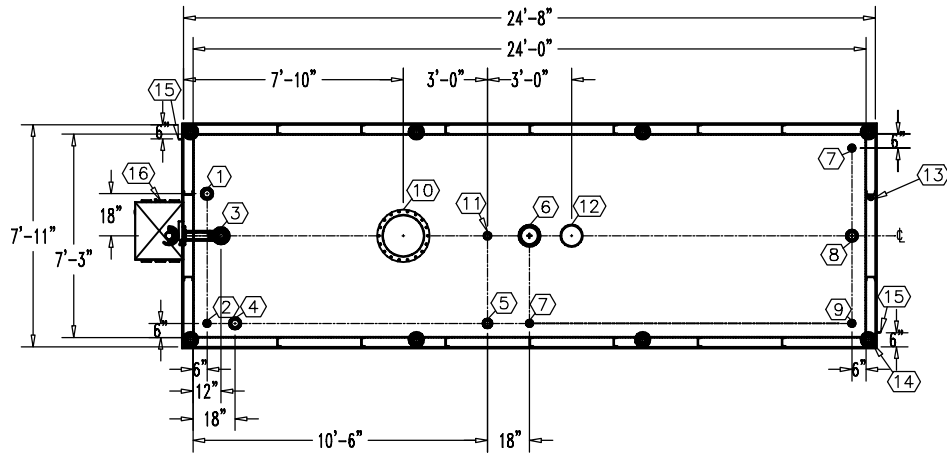


**NOTE:**  
 OVERALL SHIPPING DIMENSION: 26'-8" L X 8'-6" W X 8'-5" H



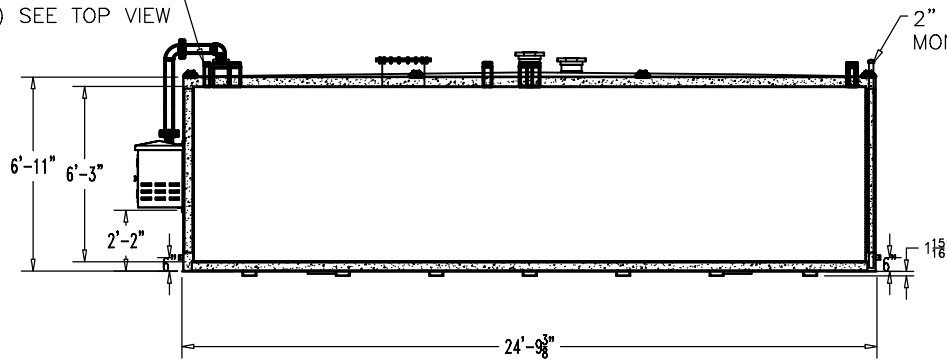
**TOP VIEW**

ITEM	SIZE	SUGGESTED FUNCTION
1	4"	PHASE 1 VAPOR RECOVERY/SPARE
2	2"	MECHANICAL GAUGE
3	6"	FILL
4	4"	ELECTRONIC LEVEL GAUGE
5	3"	PRIMARY WORKING VENT
6	8"	PRIMARY TANK EMERGENCY VENT
7	2"	SPARE
8	4"	SUBMERSIBLE PUMP
9	2"	SUCTION PUMP/SPARE
10	18"	ABOVE LIQUID MANHOLE, DWG."MHB001"
11	2"	SECONDARY WORKING VENT
12	8"	SECONDARY CONTAINMENT EMERGENCY VENT
13	2"	SECONDARY MONITOR PIPE
14	4"	FIRE RATED MATERIAL FILL
15	2" X 2"	GROUND CLIP, DWG."MCB004"
16	3" PIPE	REMOTE FILL BOX, DWG."SBB006"

**TANK SPECIFICATIONS**

VENTING CAPACITY: PRIMARY TANK - 392,000 CUBIC FEET PER HOUR  
 SECONDARY TANK - 428,000 CUBIC FEET PER HOUR  
 MATERIAL: PRIMARY TANK - 1/4" THICK  
 SECONDARY TANK - 3/16" THICK

THREADED CONNECTION (TYP.) SEE TOP VIEW

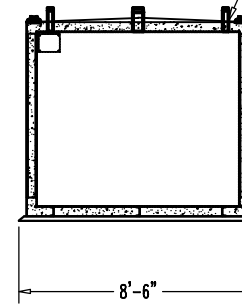


**ELEVATION**

2" STD. PIPE FOR MONITOR ACCESS

SEAL WELD ALL FITTINGS AND TANK

4" SPACE BETWEEN INNER & OUTER TANKS FILLED WITH LIGHT WEIGHT FIRE-RATED MATERIAL



**END VIEW**

PRODUCT CODE	GALLONS	DESCRIPTION	OVERALL SIZE	SHIP WT.
V4AA108MVS518	8,000	U/L-2085 ABOVE GROUND VAULT TANK	24'-8" L X 7'-11" W X 7'-1" H	33,850 LBS.

THIS DRAWING AND DESIGN SHOWN HEREIN IS THE PROPERTY OF CONTAINMENT SOLUTIONS. USE OR COPIES THEREOF CANNOT BE MADE WITHOUT WRITTEN CONSENT.

CUSTOMER NAME: \_\_\_\_\_  
**APPROVED** BY: \_\_\_\_\_ DATE: \_\_\_\_\_

**CONTAINMENT SOLUTIONS**

DRAWN BY: D. ROVANG DATE DRAWN: 02-11-09  
 DWG NUMBER: 5103670 SCALE: 1:84  
 REV:C REV BY: DAR DATE: 01-01-14 SHEET: 1 OF 1