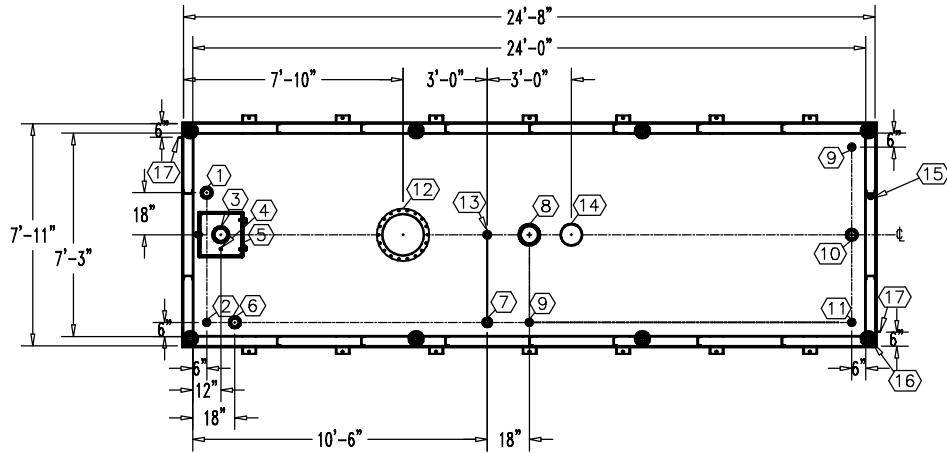


NOTE:
OVERALL SHIPPING DIMENSION: 25'-0" L X 8'-6" W X 8'-0" H



TOP VIEW

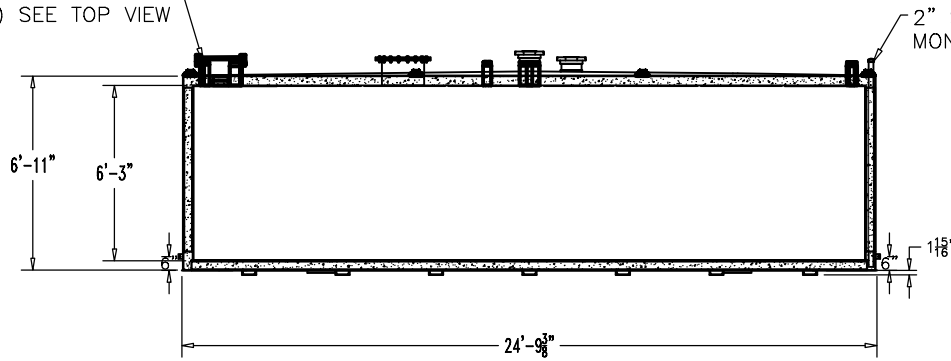
ITEM	SIZE	SUGGESTED FUNCTION
1	4"	PHASE 1 VAPOR RECOVERY/SPARE
2	2"	MECHANICAL GAUGE
3	6"	FILL
4	1/2"	DRAIN FOR SPILLBOX
5	15 GAL.	SPILLBOX, DWG."SBB001"
6	4"	ELECTRONIC LEVEL GAUGE
7	3"	PRIMARY WORKING VENT
8	8"	PRIMARY TANK EMERGENCY VENT
9	2"	SPARE
10	4"	SUBMERSIBLE PUMP
11	2"	SUCTION PUMP/SPARE
12	18"	ABOVE LIQUID MANHOLE, DWG."MHB001"
13	2"	SECONDARY WORKING VENT
14	8"	SECONDARY CONTAINMENT EMERGENCY VENT
15	2"	SECONDARY MONITOR PIPE
16	4"	FIRE RATED MATERIAL FILL
17	2" X 2"	GROUND CLIP, DWG."MCB004"

TANK SPECIFICATIONS

VENTING CAPACITY: PRIMARY TANK - 392,000 CUBIC FEET PER HOUR
 SECONDARY TANK - 428,000 CUBIC FEET PER HOUR

MATERIAL: PRIMARY TANK - 1/4" THICK
 SECONDARY TANK - 3/16" THICK

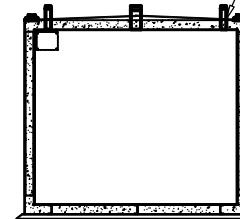
THREADED CONNECTION (TYP.) SEE TOP VIEW



ELEVATION

2" STD. PIPE FOR MONITOR ACCESS

SEAL WELD ALL FITTINGS AND TANK



4" SPACE BETWEEN INNER & OUTER TANKS FILLED WITH LIGHT WEIGHT FIRE-RATED MATERIAL

END VIEW

PRODUCT CODE	GALLONS	DESCRIPTION	OVERALL SIZE	SHIP WT.
V4AA108MVS001	8,000	U/L-2085 ABOVE GROUND VAULT TANK W/SPILLBOX	24'-8" L X 7'-11" W X 7'-1" H	33,450 LBS.



THIS DRAWING AND DESIGN SHOWN HEREIN IS THE PROPERTY OF CONTAINMENT SOLUTIONS. USE OR COPIES THEREOF CANNOT BE MADE WITHOUT WRITTEN CONSENT.

CUSTOMER NAME: _____
APPROVED BY: _____ DATE: _____

DRAWN BY: D. ROVANG	DATE DRAWN: 01-01-14
DWG NUMBER: 5100010	SCALE: 1:84
REV: _____	REV BY: _____
DATE: _____	SHEET: 1 OF 1