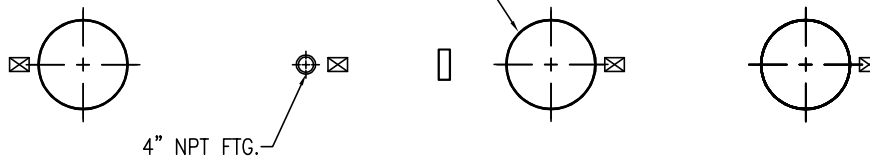


# FLOWTITE PRODUCTS


SEPTIC/WASTE WATER

NOTE: CUSTOMER SUPPLIED "ASTM C-1644" APPROVED FLEXIBLE PIPING COUPLING REQUIRED ON TANGENTIALLY MTD. NOZZLES, & PIPES

(24") 23-1/2" O.D. FRP ACCESS COLLAR w/ADHESIVE CHANNEL & 22 1/2" TANK TOP CUT-OUT(3 TYP.)



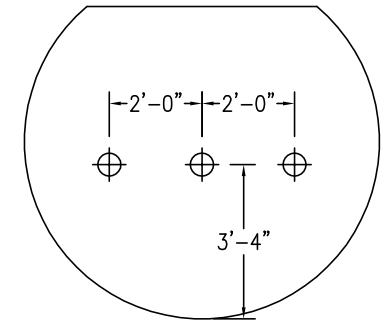
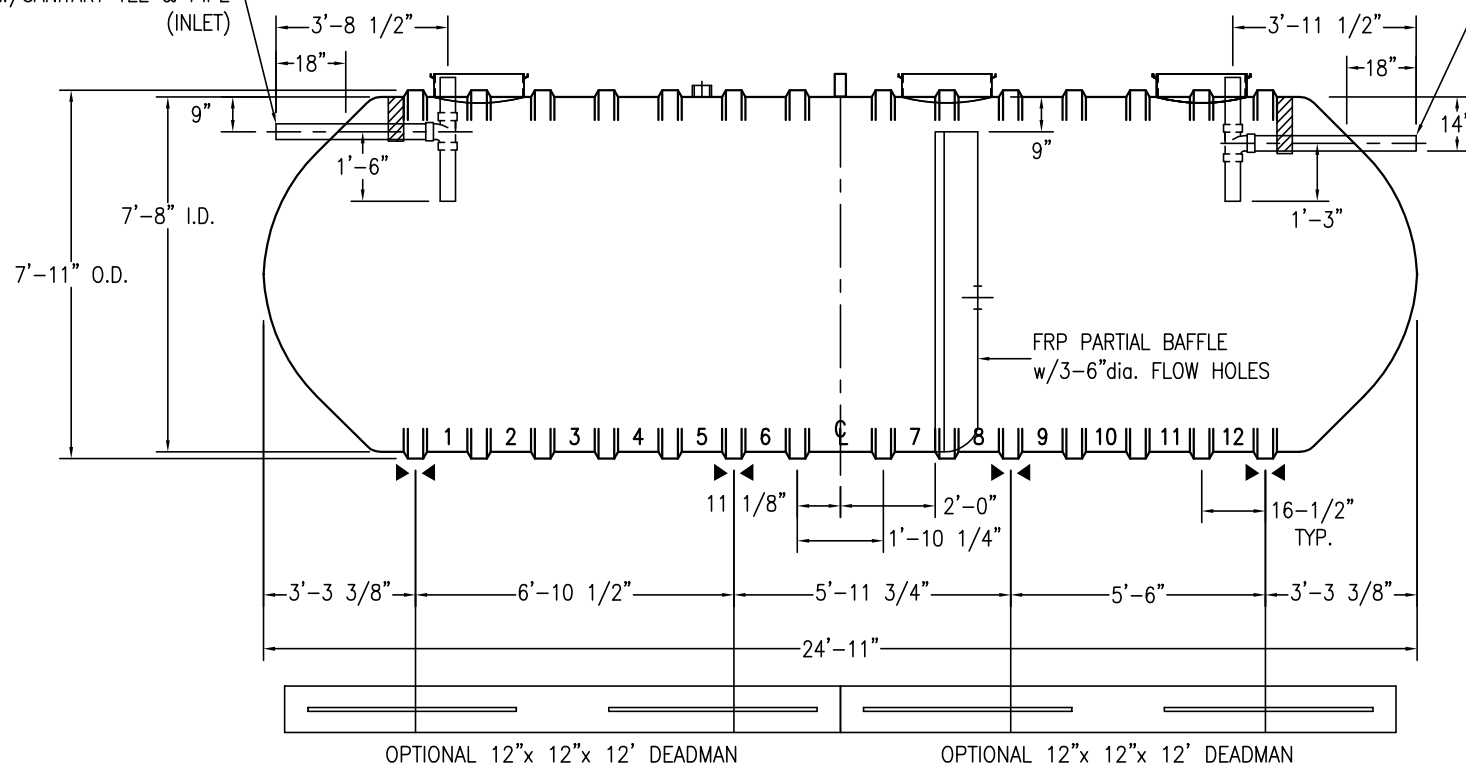
SHELL CODES: 2-E8S07SD

 THIS IS AN IAPMO APPROVED TANK THE ONLY CHANGE ALLOWED TO THIS TANK IS TO INCREASE THE INLET AND OUTLET PIPE DIAMETER. MFG. PER. PE-C22.85

**CAPACITIES:**  
LIQUID VOLUME BELOW OUTLET = 7070 GALS  
AIR VOLUME ABOVE OUTLET = 726 GALS

4" SCH-40 PVC STUB-OUT w/SANITARY TEE & PIPE (INLET)

4" SCH-40 PVC STUB-OUT w/SANITARY TEE & PIPE (OUTLET)







BAFFLE DETAIL

OPTIONAL 12"x 12"x 12' DEADMAN

OPTIONAL 12"x 12"x 12' DEADMAN

**NOTES:**

-  HOLD DOWN STRAP CLIP
-  HOLD DOWN STRAP LOCATION
-  TYPE "13" LIFT LUG - SD
-  TYPE "13" LIFT LUG - HD

SWT G-6 (8')-8000		DATE:	1/1/2014
IAPMO SEPTIC TANK		DRAWN BY:	K.A.SOEDER
<b>CONTAINMENT SOLUTIONS</b>	CAPACITY:	7,796	REVISED:
	WEIGHT: DRY/WET	2450	DWG NUMBER:
			88MSW-IS