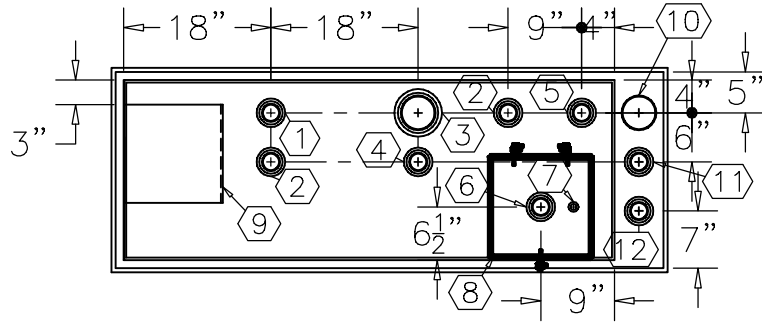
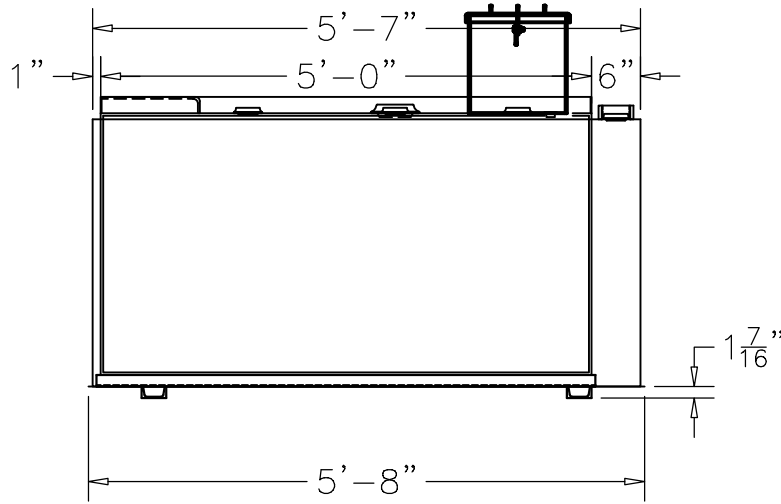


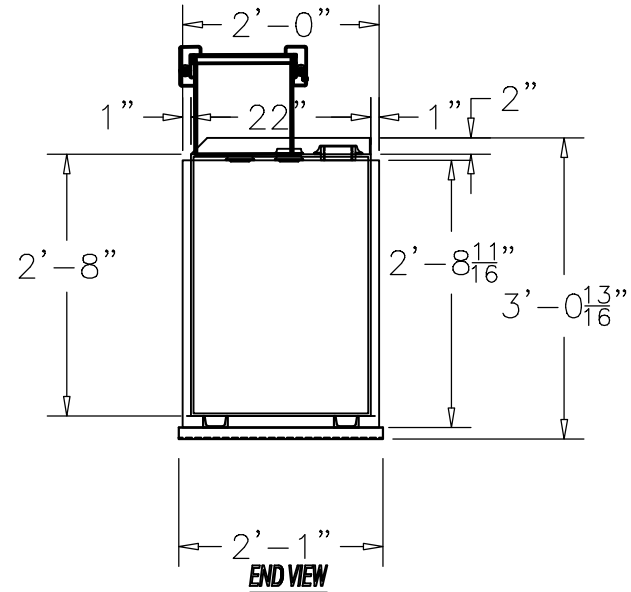
**NOTE:**  
 OVERALL SHIPPING DIMENSION: 5'-8" L X 2'-1" W X 4'-0" H



**TOP VIEW**



**ELEVATION**



**END VIEW**

ITEM	SIZE	SUGGESTED FUNCTION
1	2"	PUMP SUPPLY
2	2"	SPARE
3	4"	PRIMARY TANK EMERGENCY VENT
4	2"	MECHANICAL GAUGE/ SPARE
5	2"	PRIMARY TANK WORKING VENT
6	2"	FILL
9	12" X 12"	PUMP BRACKET, DWG."PBB002"
7	1/2"	DRAIN FOR SPILLBOX
8	7 GAL.	SPILLBOX, DWG."SBB002"
10	4"	SECONDARY CONTAINMENT EMERGENCY VENT
11	2"	SECONDARY MONITOR PORT/ SPARE
12	2"	SECONDARY WORKING VENT

**TANK SPECIFICATIONS**

VENTING CAPACITY: PRIMARY TANK - 52,700 CUBIC FEET PER HOUR  
 SECONDARY TANK - 63,200 CUBIC FEET PER HOUR  
 MATERIAL: PRIMARY TANK - 10 GA.  
 SECONDARY TANK - 10 GA.

PRODUCT CODE	GALLONS	DESCRIPTION	OVERALL SIZE	SHIP WT.
BTAA1180DS001	180	UL-142 DOUBLE WALL BENCHTOP TANK	5'-8" L X 2'-1" W X 3'-1" H	830 LBS.

THIS DRAWING AND DESIGN SHOWN HEREIN IS THE PROPERTY OF CONTAINMENT SOLUTIONS. USE OR COPIES THEREOF CANNOT BE MADE WITHOUT WRITTEN CONSENT.

CUSTOMER NAME \_\_\_\_\_

**APPROVED** BY: \_\_\_\_\_ DATE: \_\_\_\_\_



DRAWN BY: D. ROVANG	DATE DRAWN: 01-01-14
DWG NUMBER: 5100245	SCALE: 1:24
REV: _____	REV BY: _____
DATE: _____	SHEET: 1 OF 1