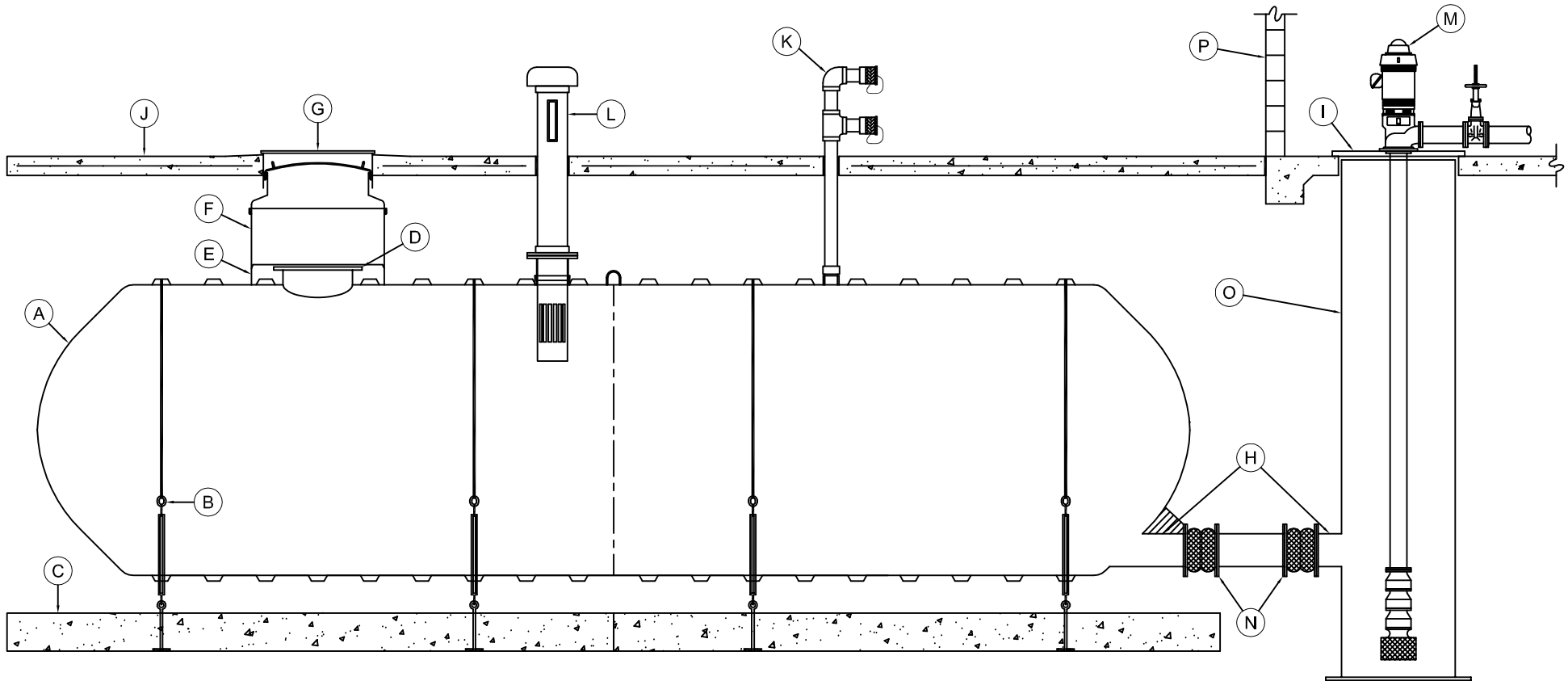


MARK	EQUIPMENT LISTING AND SUPPLIER	CSI	CUSTOMER	MARK	EQUIPMENT LISTING AND SUPPLIER	CSI	CUSTOMER
A	C.S.I. SINGLE WALL FIBERGLASS TANK	X		I	STEEL MOTOR MOUNTING PLATE		X
B	C.S.I. FRP HOLD DOWN STRAP & TURNBUCKLE ASSEMBLY	X		J	H-20 AXLE LOAD CONCRETE APRON		X
C	C.S.I. PRECAST DEADMAN ANCHOR WITH EYEBOLTS	X		K	4" NPT FTG w/ DUAL NST FILL OR RECIRCULATING POINTS	X	
D	22" FRP FLANGED MANWAY	X		L	10" NPT FITTING WITH VENT/LEVEL INDICATOR ASSEMBLY	X	
E	42" ATTACHED CONTAINMENT COLLAR	X		M	VERTICAL PUMP w/ DISCHARGE HEAD AND MULTI STAGE BOWL		X
F	42" TANK SUMP WITH 32" I.D. OPENING	X		N	CONNECTING PIPE w/ FLEXIBLE CONNECTORS		X
G	36" DIAMETER MANHOLE AND COVER		X	O	FIBERGLASS VERTICAL PUMP VAULT	X	
H	FLANGED NOZZLES	X		P	PUMP BUILDING		X



TYPICAL ILLUSTRATION DRAWING
HORIZONTAL GRAVITY FIRE PROTECTION
REMOTE VERTICAL TURBINE SUMP BASIN

THIS DRAWING IS FOR ILLUSTRATIVE PURPOSES ONLY. IT IS THE RESPONSIBILITY OF THE PURCHASER AND/OR ENGINEER TO DESIGN A SYSTEM IN COMPLIANCE WITH ALL GOVERNING MUNICIPAL CODES.

