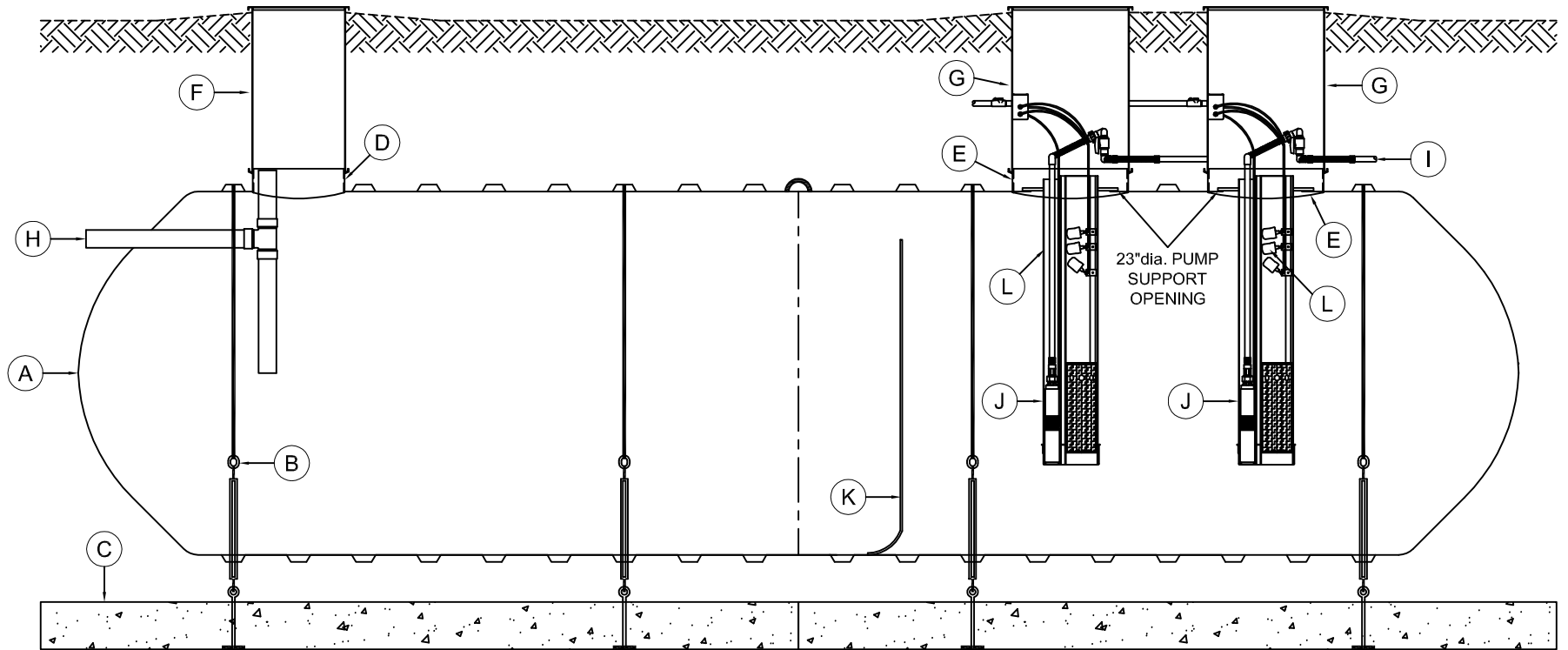


MARK	EQUIPMENT LISTING AND SUPPLIER	CSI	CUSTOMER	MARK	EQUIPMENT LISTING AND SUPPLIER	CSI	CUSTOMER
A	C.S.I. SINGLE WALL FIBERGLASS TANK	X		G	30" FRP RISER WITH COVER	X	
B	C.S.I. FRP HOLD DOWN STRAP & TURNBUCKLE ASSEMBLY	X		H	4" PVC INLET PIPING WITH SANITARY TEE	X	
C	C.S.I. PRECAST DEADMAN ANCHOR WITH EYEBOLTS	X		I	EFFLUENT DISCHARGE		X
D	23.5" FIBERGLASS COLLAR WITH TANK ACCESS OPENING	X		J	SUSPENDED EFFLUENT PUMP WITH FILTER		X
E	29.5" FIBERGLASS COLLAR WITH 23" TANK ACCESS OPENING	X		K	7/8 HEIGHT COMPARTMENT BAFFLE	X	
F	24" FRP RISER WITH COVER	X		L	PUMP AND LEVEL CONTROL ASSEMBLY		X



THIS DRAWING IS FOR ILLUSTRATIVE PURPOSES ONLY. IT IS THE RESPONSIBILITY OF THE PURCHASER AND/OR ENGINEER TO DESIGN A SYSTEM IN COMPLIANCE WITH ALL GOVERNING MUNICIPAL CODES.

TYPICAL ILLUSTRATION DRAWING
DUAL LARGE COMMERCIAL ONSITE SEPTIC
PUMP-OUT EFFLUENT FILTER SYSTEM

