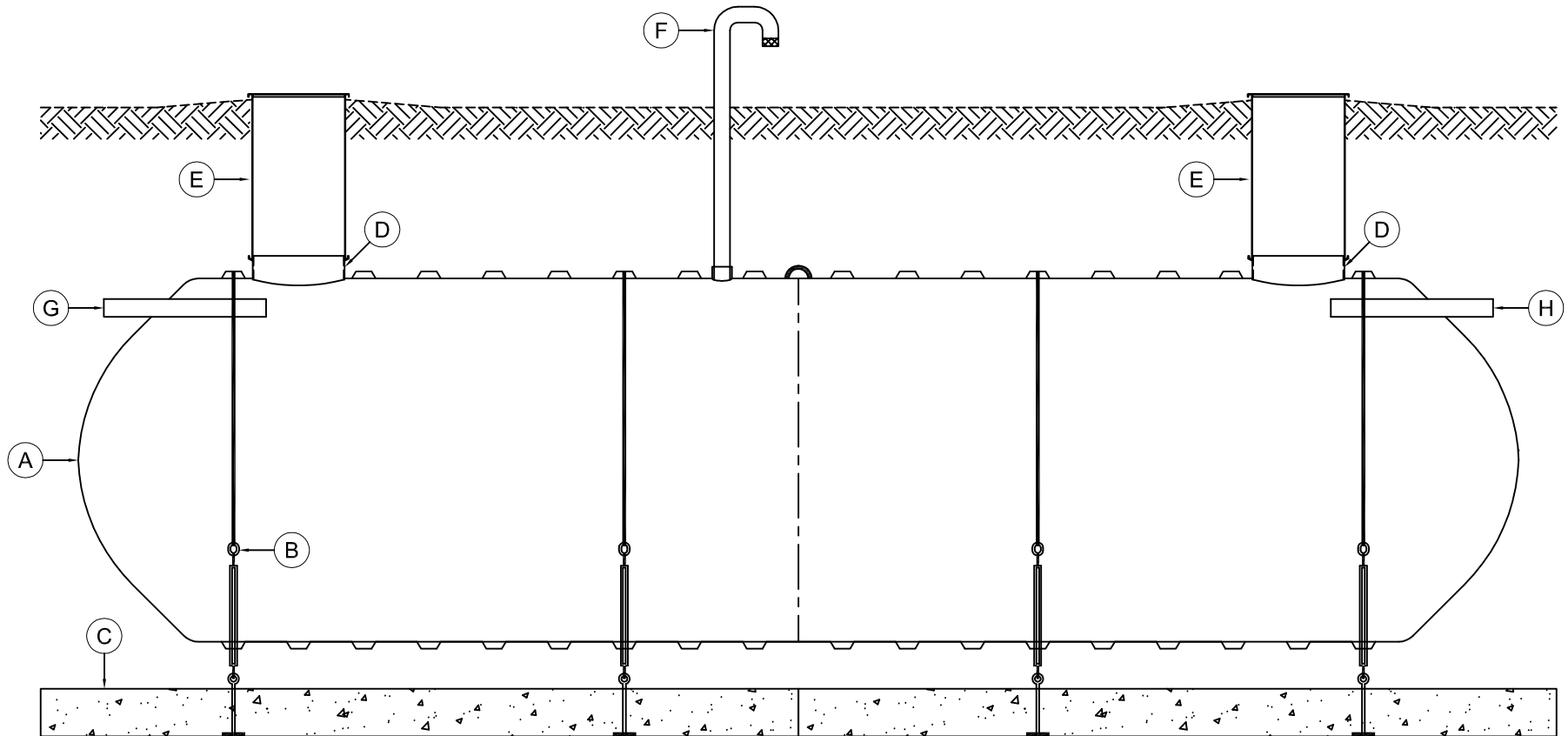


MARK	EQUIPMENT LISTING AND SUPPLIER	CSI	CUSTOMER	MARK	EQUIPMENT LISTING AND SUPPLIER	CSI	CUSTOMER
A	C.S.I. SINGLE WALL FIBERGLASS TANK	X		E	24" FRP RISER WITH COVER	X	
B	C.S.I. FRP HOLD DOWN STRAP & TURNBUCKLE ASSEMBLY	X		F	4" NPT FITTING WITH DEFLECTER PLATE - VENT	X	
C	C.S.I. PRECAST DEADMAN ANCHOR WITH EYEBOLTS	X		G	4" PVC INLET PIPING WITH SANITARY TEE	X	
D	23.5" FIBERGLASS COLLAR WITH TANK ACCESS OPENING	X		H	4" PVC OUTLET PIPING WITH SANITARY TEE	X	



THIS DRAWING IS FOR ILLUSTRATIVE PURPOSES ONLY. IT IS THE RESPONSIBILITY OF THE PURCHASER AND/OR ENGINEER TO DESIGN A SYSTEM IN COMPLIANCE WITH ALL GOVERNING MUNICIPAL CODES.

TYPICAL ILLUSTRATION DRAWING ONSITE SEPTIC STORAGE TANK

