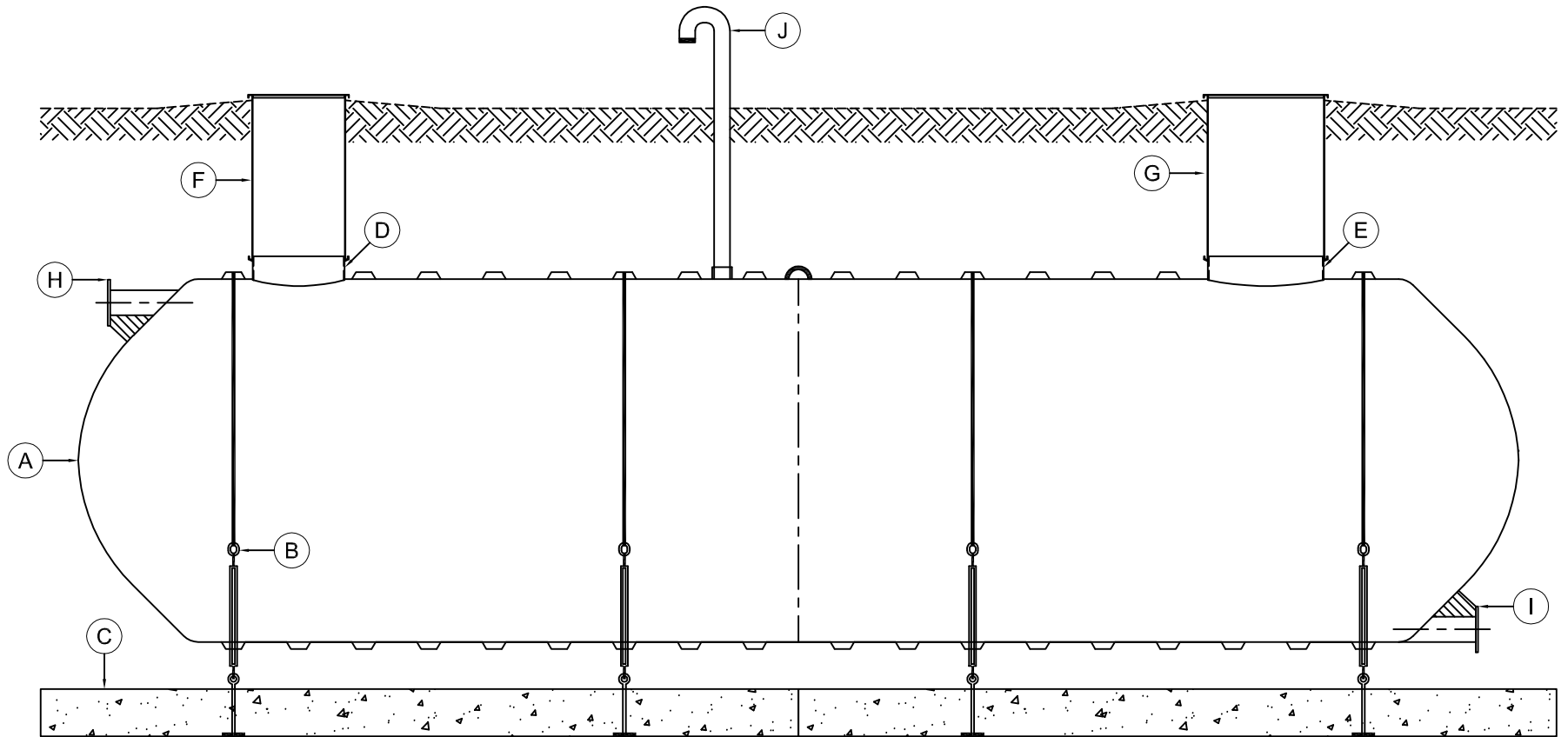


MARK	EQUIPMENT LISTING AND SUPPLIER	CSI	CUSTOMER	MARK	EQUIPMENT LISTING AND SUPPLIER	CSI	CUSTOMER
A	C.S.I. SINGLE WALL FIBERGLASS TANK	X		F	24" FRP RISER WITH COVER	X	
B	C.S.I. FRP HOLD DOWN STRAP & TURNBUCKLE ASSEMBLY	X		G	30" FRP RISER WITH COVER	X	
C	C.S.I. PRECAST DEADMAN ANCHOR WITH EYEBOLTS	X <td	H	6" TANGENTIALLY MOUNTED FLANGED NOZZLE - INLET	X		
D	23.5" FIBERGLASS COLLAR WITH TANK ACCESS OPENING	X		I	6" TANGENTIALLY MOUNTED FLANGED NOZZLE - OUTLET	X	
E	29.5" FIBERGLASS COLLAR WITH TANK ACCESS OPENING	X		J	4" NPT FITTING - TANK VENT	X	



THIS DRAWING IS FOR ILLUSTRATIVE PURPOSES ONLY. IT IS THE RESPONSIBILITY OF THE PURCHASER AND/OR ENGINEER TO DESIGN A SYSTEM IN COMPLIANCE WITH ALL GOVERNING MUNICIPAL CODES.

TYPICAL ILLUSTRATION DRAWING HORIZONTAL STORM WATER COLLECTION

