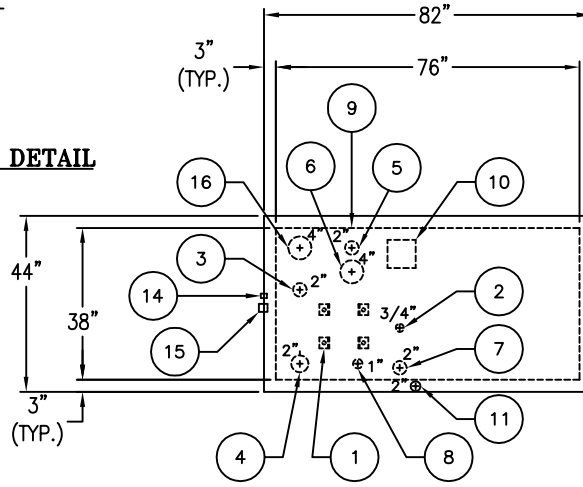


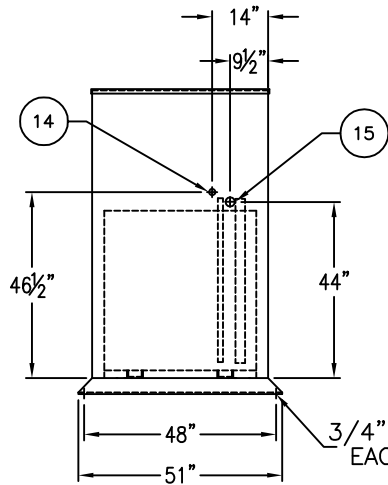
**PUMP MOUNT DETAIL**

**TOP OPENINGS LAYOUT**

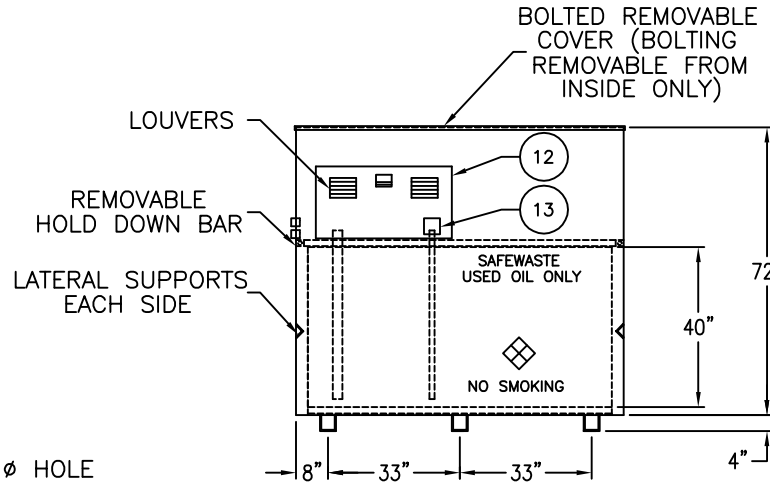


**TOP VIEW**

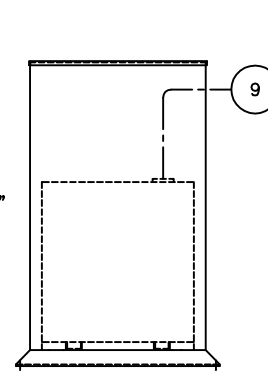
PART LIST(500 GALLON SAFE-WASTE)		
FIND#	DESCRIPTION	QTY.
1	PUMP MOUNT ANGLES	4
2	3/4" OPENING FOR PRODUCT DISCHARGE	1
3	2" AUTOMATIC AIR OPERATED HIGH LEVEL SHUT-OFF VALVE WITH WHISTLE FOR DIAPHRAGM PUMP	1
4	2" SUCTION TUBE WITH KAMLOCK AND DUSTCAP FOR PRODUCT WITHDRAWAL	1
5	2" PRIMARY WORKING VENT	1
6	4" PRIMARY EMERGENCY VENT	1
7	2" PRODUCT LEVEL GAUGE	1
8	1" OPENING FOR SAMPLING	1
9	3 1/8" HOLE FOR VENT PIPE	1
10	U/L LABEL	1
11	ANNULAR SPACE MONITORING	1
12	18" X 34" CABINET ACCESS DOOR	1
13	PLEXIGLASS VIEW PORT	1
14	1/2" FULL COUPLING FOR AIR SUPPLY HOSE	1
15	3/4" FULL COUPLING FOR PRODUCT SUCTION	1
16	4" SPARE WITH PVC PLUG	1



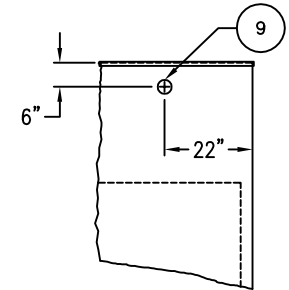
**LEFT END VIEW**



**ELEVATION**



**RIGHT END VIEW**



**BACK VIEW**

NOTE:  
ALL INTERNAL PIPING  
TO BE DONE IN SHOP

\*SEE ORDER ENTRY FOR  
PAINT & EQUIPMENT

PRODUCT CODE	GALLONS	DESCRIPTION	OVERALL SIZE	SHIP WT.
SWAA1500DS000	500	UL-142 SAFE WASTE	6'10"L X 3'8"W X 6'4"H	1,800 LBS

THIS DRAWING AND DESIGN SHOWN HEREIN IS THE PROPERTY OF CONTAINMENT SOLUTIONS. USE OR COPIES THEREOF CANNOT BE MADE WITHOUT WRITTEN CONSENT.

CUSTOMER NAME \_\_\_\_\_

**APPROVED** BY: \_\_\_\_\_ DATE: \_\_\_\_\_

<b>CONTAINMENT SOLUTIONS</b>	
DRAWN BY: R.P.H.	DATE DRAWN: 01-01-14
DWG NUMBER: 100212	SCALE: SALES
REV: _____	REV BY: _____ DATE: _____ SHEET: 1 OF 1