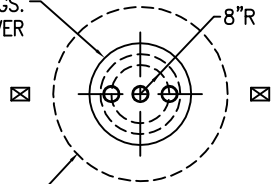


22" FLGD. MANWAY  
w/3-4" C.S. NPT FTGS.  
& COVER

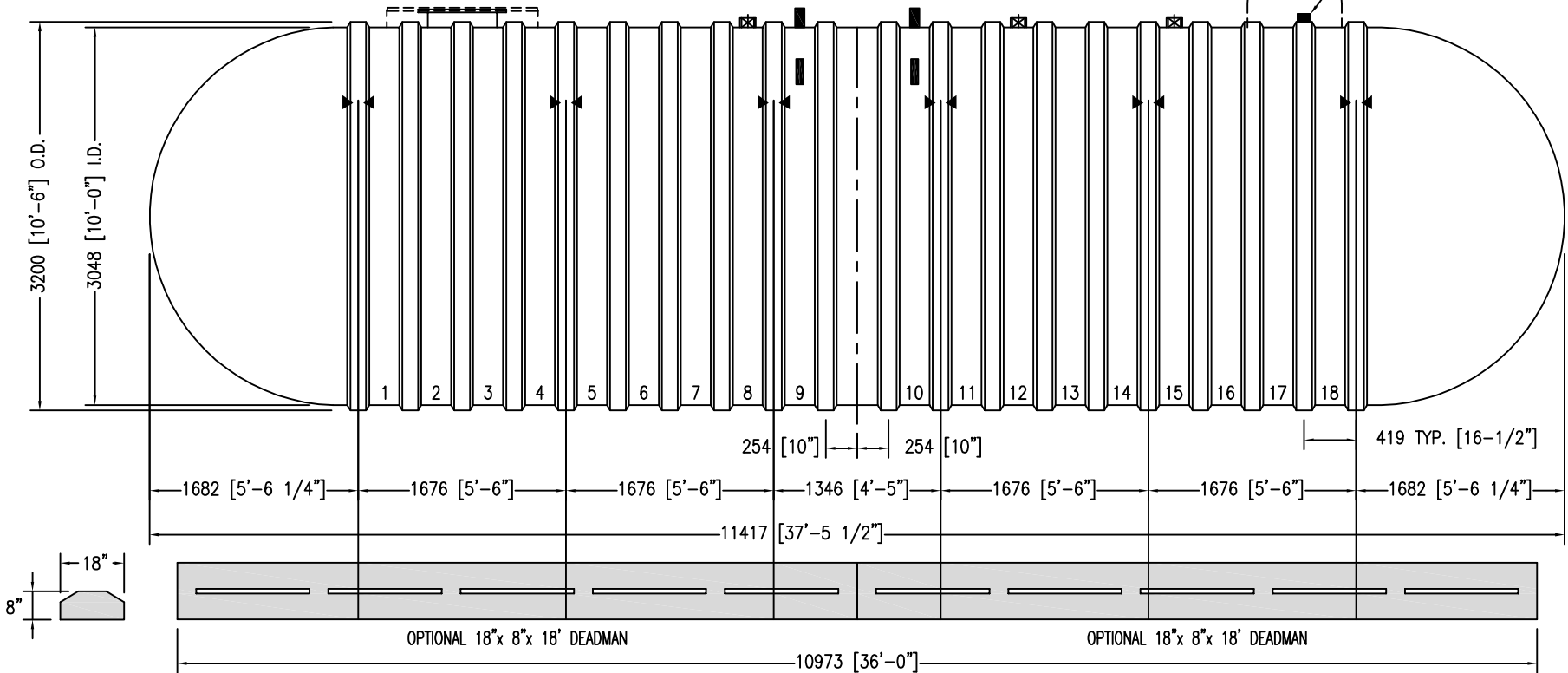


OPTIONAL 48" CONTAINMENT COLLAR



4" FRP NPT FTGS. (3 TYP.)

OPTIONAL RESERVOIR  
4" ANNULAR SPACE FTG.



NOTES:



- ◄ ◄ HOLD DOWN STRAP LOCATION
- TYPE "13" LIFT LUG - SD
- TYPE "13" LIFT LUG - HD
- UNLESS NOTED-ALL DIMS ARE IN mm

CUSTOMER:	
APPROVAL SIGNATURE / DATE:	
DWG NUMBER: <b>X75MLDW-CNF</b>	DRAWN BY: <b>R.OXNER</b>

<b>Model DWT6 10-75000 L</b>		
<b>Double Wall Fiberglass CUL Tank</b>		
CAPACITY: LITERS / GALLONS <b>75,523 / 19,951</b>	WEIGHT: KILOS / POUNDS <b>6,150 / 13,550</b>	DATE: <b>10/01/18</b>

**CONTAINMENT SOLUTIONS®**

www.containmentsolutions.com

**1-877-CSI-TANK**